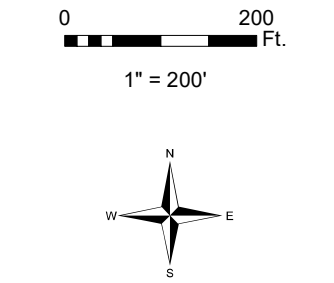
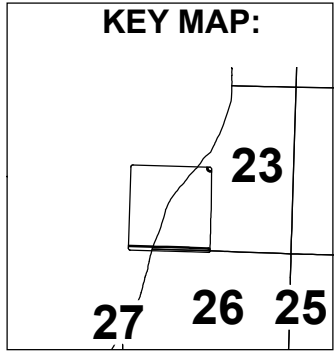


TOWNSHIP:
38

RANGE:
01

SECTION:
23

MAP NO.:
04



- Tax Parcels
- Plats
- Lots
- Section Lines
- Qtr. Section Lines
- City Limits
- Annexations
- Railroads
- Pipelines
- Waterlines
- Waterbodies*

 **Whatcom County**
Assessor's Office

Jan. 06, 2026

This map is for assistance in property location and not guaranteed for accurate measurements.

Geographic Tax Parcel Numbers (GID) are a 16-digit number derived from a combination of the Township, Range and Section, plus the XY coordinates of the theoretical center of the parcel, plus four trailing zeroes. The trailing zeroes are used where an auxiliary tax parcel exists at the same location as the primary parcel, such as, a condo unit or, a mobile home.

*Waterbodies provided for reference only; has not been verified by Assessor

For information on reading maps visit our website: whatcomcounty.us/177/Assessor