

TOWNSHIP:

39

RANGE:

02

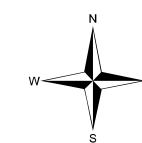
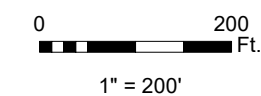
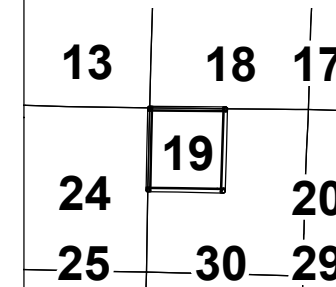
SECTION:

19

MAP NO.:

03

KEY MAP:



- Tax Parcels
- Plats
- Lots
- Section Lines
- Qtr. Section Lines
- City Limits
- Annexations
- Railroads
- Pipelines
- Waterlines
- Waterbodies*

Whatcom County
Assessor's Office

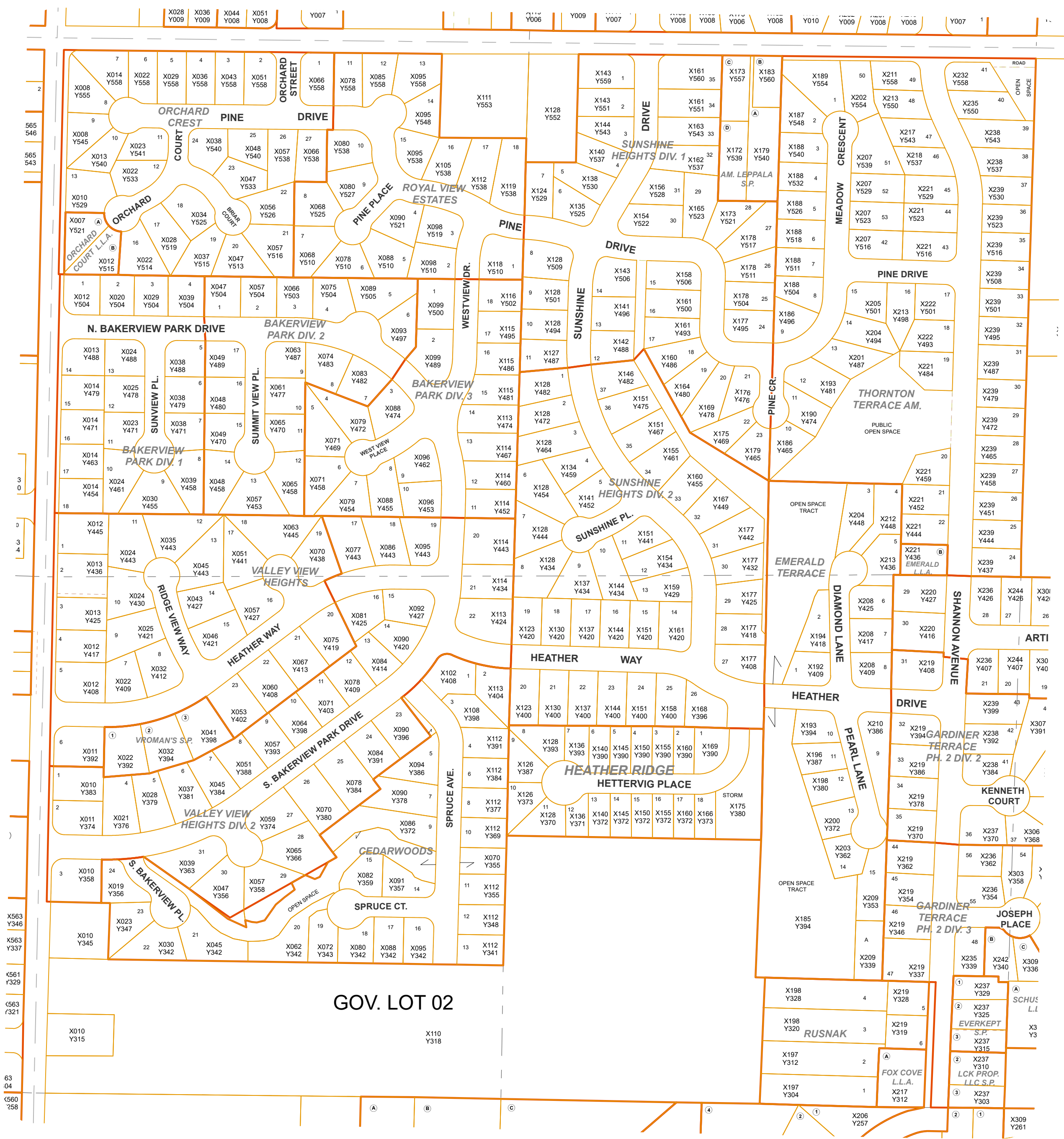
Jan. 06, 2025

This map is for assistance in property location and not guaranteed for accurate measurements.

Geographic Tax Parcel Numbers (GID) are a 16-digit number derived from a combination of the Township, Range and Section, plus the XY coordinates of the theoretical center of the parcel, plus four trailing zeroes. The trailing zeroes are used where an auxiliary tax parcel exists at the same location as the primary parcel, such as, a condo unit or, a mobile home.

*Waterbodies provided for reference only; has not been verified by Assessor

For information on reading maps visit our website: whatcomcounty.us/177/Assessor



GOV. LOT 02

X563 Y346
X563 Y337
X561 Y329
X563 Y321
X563 Y315

X309 Y261
X309 Y303
X306 Y368
X307 Y391
X300 Y421
X300 Y426
X300 Y428
X300 Y440
X300 Y444
X300 Y458
X300 Y465
X300 Y472
X300 Y479
X300 Y487
X300 Y495
X300 Y501
X300 Y508
X300 Y516
X300 Y523
X300 Y530
X300 Y537
X300 Y543
X300 Y550
X300 Y558